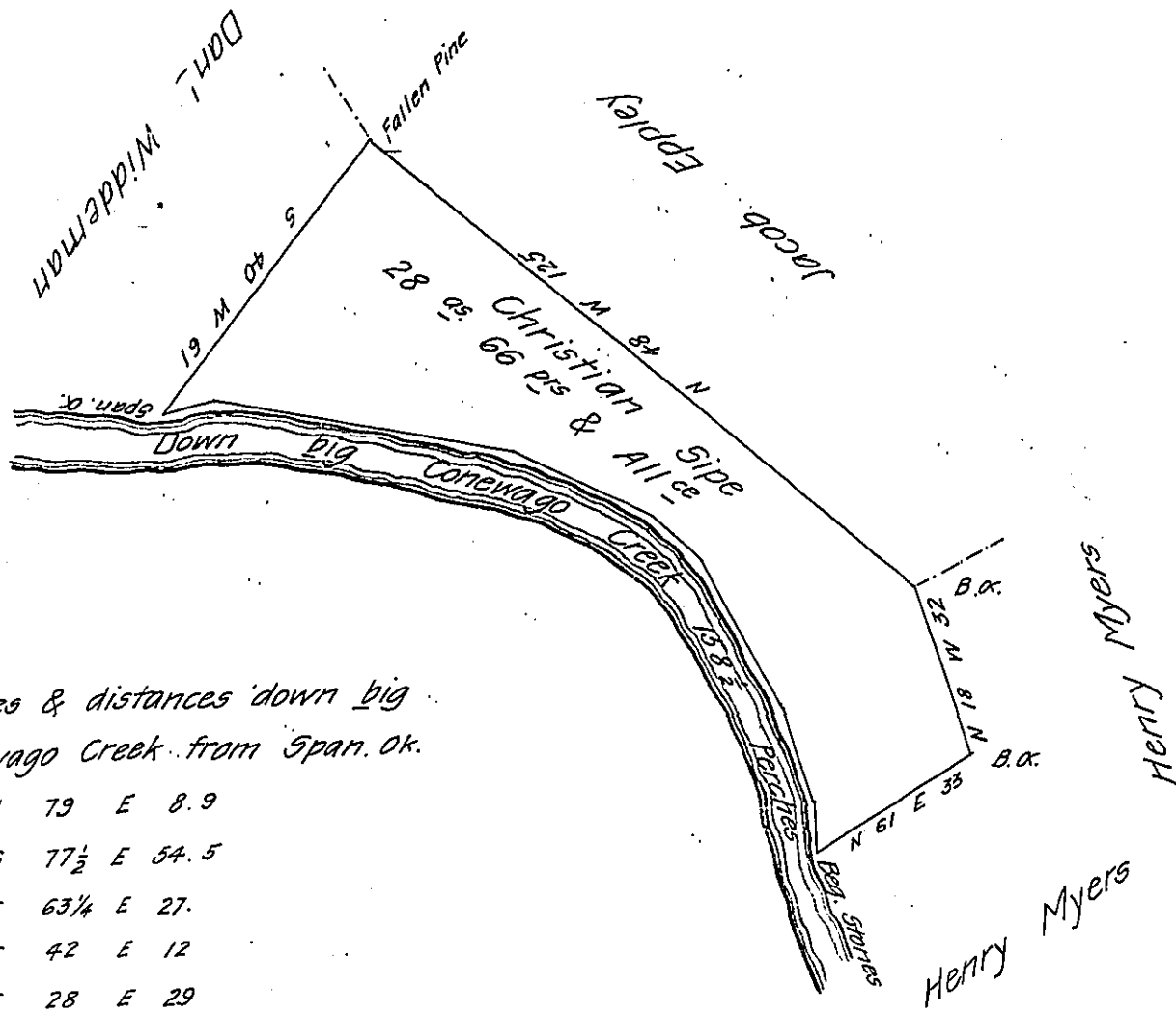


FORM NO. 1.



Courses & distances down big
Conewago Creek from Span. Ok.

N	79	E	8.9
S	77½	E	54.5
S	63¼	E	27.
S	42	E	12
S	28	E	29
S	15¼	E	18.5
S	4	E	8.6
			158.5

Situate in Newbury township York County Containing twenty-eight acres
Sixty six perches and Allowance of Six Pr Cent. Surveyed for Jacob Spangler Esq.
then D.S. on 27th November 1812 in pursuance of a Warrant granted to Christian
Sipe for 26^{ac} dated the 6th July 1812 and now returned as the Official Work of
the said Jacob Spangler 1st May 1830

To Gabriel Hiester Esquire

Isaac Kirk D.S.

Surveyor General.

N.B. The Improvements at the time of Surveying were a dwelling house and a
small piece of Cleared land rendering it a permanent resident settlement with a
manifest intention of making it a place of abode &c^a

I. Kirk

IN TESTIMONY that the above is a copy of the original remaining on file in
the Department of Internal Affairs of Pennsylvania, made
conformably to an Act of Assembly approved the 16th day of
February, 1833, I have hereunto set my Hand and caused
the Seal of said Department to be affixed at Harrisburg,
this twenty fourth day of April 1908

Henry Howard
Secretary of Internal Affairs.